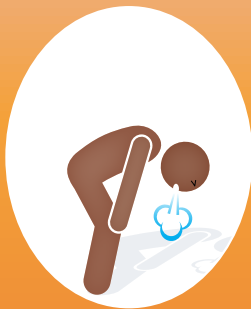


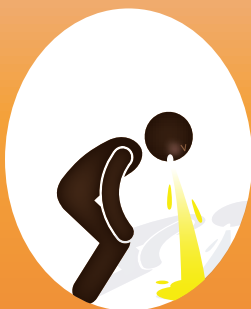
Could it be **SEPSIS?**

Been crook and not getting better? Getting worse?

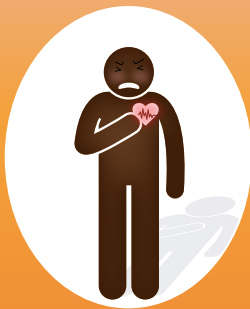
Do you have any of these symptoms?



Short or fast
breath



Feeling sick in
the stomach



Heart beating
too fast



Feeling really
cold



Runny poo



Feeling really hot



Not much pee



Feeling really tired
or confused



Pain or 'feeling
worse than ever'



Act quickly! Go to hospital NOW!



Queensland Adult Sepsis



**Queensland
Government**