

Queensland Clinical Senate

Clinician leadership. Consumer collaboration. Better care.

Queensland Clinical Senate Meeting Thursday 24 June 2021 *Patient Safety and Quality System Strategy Map*

The Queensland Clinical Senate met via Microsoft Teams 24 June 2021 to consider and provide feedback on Queensland Health's *Patient Safety and Quality System Strategy Map* ("the Strategy"). The 75 attendees included senate members and regular guests, as well as additional consumer representatives drawn from the Queensland Health Tier 2 committee consumer members.

The Strategy was introduced by Adj Prof Shelley Nowlan, A/Deputy Director-General, Clinical Excellence Queensland, and Ms Kirstine Sketcher-Baker, Executive Director, Patient Safety and Quality Improvement Service (PSQIS), who explained the co-design process leading to this document. Senate Chair, Dr Alex Markwell noted the importance of clinicians and consumers contributing to such a Strategy and encouraged participants to be brave and thorough in providing feedback.

Participants were then moved into small facilitated virtual groups, (with a consumer representative in each group) to explore the Strategy in further detail, and provide feedback on the Strategy's face validity, its objectives, any major omissions, measurement opportunities and 'what good would look like'. The feedback was captured digitally and is being reviewed by PSQIS.

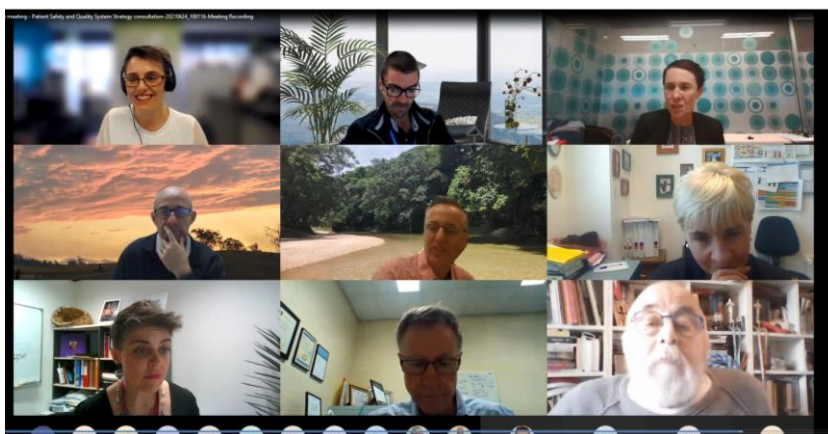


Figure 1: Some of the participants in the plenary discussions

Three recommendations were proposed during the meeting, and subsequently put to Senate members via a survey, yielding strong support.

1. The QCS *endorses* the PSQ System Strategy Map in principle
2. The QCS recommends the Queensland Health System Strategy Plan is formally *linked* to the PSQ System Strategy Map
3. The QCS supports the planned next stage of consultation to investigate *implementation*.

The recommendations were conveyed to the Queensland Health Leadership Advisory Board the day after the QCS meeting.

The Senate will continue to advocate for the widespread implementation of the Patient Safety and Quality System Strategy Map, and for its linkage into the Queensland Health System Strategy Plan.